

Working for Outwood Grange Academies Trust

Support Staff



Students First
Raising standards and transforming lives





Students First:
raising standards
transforming learning



Welcome,

Thank you for choosing to apply to Outwood. If you are successful, we hope that you will have an enjoyable and fulfilling career with us and that together, we continue to have a positive impact on the life-chances of thousands of young people.

While this pack will provide you with all the details you'll need as you progress with your application, and hopefully your career with us, I wanted to introduce myself as the Chief Executive and Accounting Officer of Outwood Grange Academies Trust and introduce the Outwood vision to you.

Quite simply, we want to be known for putting Students First, raising standards and transforming lives.

It's a bold vision, we know, but every day our colleagues strive to put it in place, whether that be in the classroom or in one of our business services roles, and we make sure we support every Outwood colleague in doing so.

Whether you're joining us as a support staff member, an NQT, teacher or in a leadership position, and everything in between, we will invest in you and your development throughout your career.

By all working together, supporting and motivating each other, we believe we can raise current standards, and transform the lives of our students.

We fully understand that as a Trust if we support and care for you to help you reach your potential, then in turn we can help ensure all the children in your charge will also reach theirs.

With all but one of our inspected academies now rated as a Good or Outstanding school, even though almost all of them joined the Trust when they were inadequate or requiring improvement, now is an exciting time to join us.

Outwood continues to play an important role nationally helping to shape educational policy and practice and we want the best people, who share our vision and commitment to children to drive us forward.

So, before I finish, may I wish you good luck with your application and please do not hesitate to contact one of our team if you wish to discuss any points about your application or Outwood in general.



Martyn Oliver

Chief Executive, Outwood Grange Academies Trust

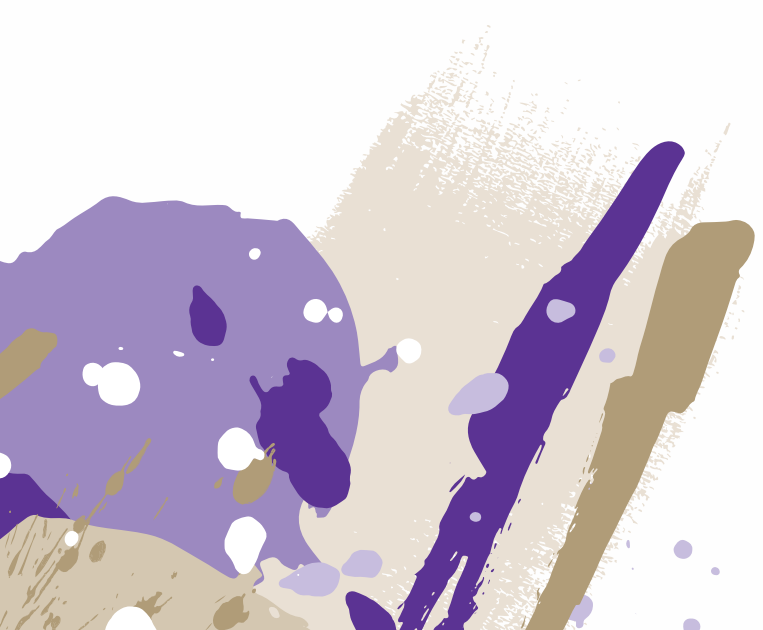


Staff Benefits

We look for inspirational and motivated educators and determined individuals, who care deeply about children, and who have a similar vision to that of the Trust. With most of our inspected academies now rated as Good schools or Outstanding schools, now is an exciting time to join Outwood Grange Academies Trust.

We are committed to putting students first, raising standards and transforming lives. To do this, we are determined to fully support our colleagues.

As part of your employment with Outwood, you will be entitled to a whole host of staff benefits including:





- A generous pension scheme
 - Teacher's Pension Scheme for teachers
 - Local Government Pension Scheme for support staff
- Synergy car leasing
- 24-hour Employee Assistance Programme
- 25+ days holiday, plus bank holidays (for non-term time only employees) and flexible family friendly policies
- Opportunities for continuing professional development (CPD), offered with the Outwood Institute of Education, including the 'Transform Outwood' career pathway programme.
- Staff discounts

Academies by Region

Secondary Academies - Northern Region

Academy	Contact Number
Outwood Academy Acklam Hall Drive, Acklam, Middlesbrough TS5 7JY	01642 818200 Ext. 205
Outwood Academy Bishopsgarth Harrowgate Lane, Stockton-on-Tees TS19 8TF	01642 586262 Ext. 141
Outwood Academy Bydales Coast Road, Marske-by-the-Sea, Redcar TS11 6AR	01642 474000 Ext. 202
Outwood Academy Normanby Normanby Road, Middlesbrough TS6 9AG	01642 454577
Outwood Academy Ormesby Toothill Avenue, Netherfields, Middlesbrough TS3 0RH	01642 452191 Ext. 1004
Outwood Academy Redcar Kirkleatham Lane, Redcar TS10 4AB	01642 289211 Ext. 1112
Outwood Academy Riverside Opens 2020	

Secondary Academies - Central Region

Academy	Contact Number
Outwood Grange Academy Potovens Lane, Wakefield WF1 2PF	01924 204350 Ext. 227
Outwood Academy Carlton Royston Lane, Barnsley S71 3EW	01226 728494 Ext. 231
Outwood Academy City Fields Warmfield View, Wakefield WF1 4SF	01924 298752
Outwood Academy Easingwold York Road, York YO61 3EF	01347 821451
Outwood Academy Freeston Favell Avenue, Normanton, Wakefield WF6 1HZ	01924 302560
Outwood Academy Hemsworth Wakefield Road, Hemsworth, Pontefract WF9 4AB	01977 624220 Ext. 246
Outwood Academy Ripon Clotherholme Road, Ripon, North Yorkshire HG4 2DE	01765 604564 Ext. 234
Outwood Academy Shafton Engine Road Roundabout, Shafton, Barnsley S72 8RE	01226 717730 Ext. 211



Secondary Academies - Southern Region

Academy	Contact Number
Outwood Academy Adwick Windmill Balk Lane, Woodlands, Doncaster DN6 7SF	01302 722237 Ext. 226
Outwood Academy Brumby Cemetery Road, Scunthorpe, North Lincolnshire DN16 1NT	01724 708060 Ext. 228
Outwood Academy City Stradbroke Road, Sheffield S13 8SS	0114 2358120 Ext. 287
Outwood Academy Danum Armthorpe Road, Doncaster DN2 5QD	01302 831385 Ext. 221
Outwood Academy Foxhills 2 Foxhills Road, Scunthorpe DN15 8LJ	01724 708080 Ext. 228
Outwood Academy Newbold Highfield Lane, Newbold, Chesterfield S41 8BA	01246 230550 Ext. 111
Outwood Academy Portland Netherton Road, Worksop, Nottinghamshire S80 1AL	01909 471023 (Direct)
Outwood Academy Valley Valley Road, Worksop, Nottinghamshire S81 7EN	01909 475121 Ext. 287

Primary Academies

Academy	Contact Number
Outwood Primary Academy Bell Lane Bell Lane, Ackworth, Pontefract WF7 7JH	01977 613304
Outwood Primary Academy Darfield 124 Snape Hill Road, Darfield, Barnsley S73 9LT	01226 753048
Outwood Academy Newstead Green Cow Lane, Wakefield WF4 2BE	01226 722484
Outwood Primary Academy Littleworth Grange Littleworth Lane, Lundwood, Barnsley S71 5RG	01226 777530
Outwood Primary Academy Lofthouse Gate Canal Lane, Lofthouse Gate, Wakefield WF3 3HU	01924 821160
Outwood Primary Academy Kirkhamgate Brandy Carr Road, Kirkhamgate, Wakefield WF2 0RS	01924 907436
Outwood Primary Academy Ledger Lane Ledger Lane, Wakefield WF1 2PH	01924 907430
Outwood Primary Academy Park Hill Irwin Crescent, Wakefield WF1 4QY	01924 303655
Outwood Primary Academy Greystone Quarry Moor Lane, Ripon HG4 1RW	01765 603481
Outwood Junior Academy Brumby Queensway, Scunthorpe DN16 2HY	01724 865644

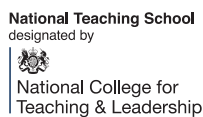
OIE Overview

The Outwood Institute of Education is a network offering professional learning, initial teacher training and school to school support across the North of England.

The network consists of five teaching schools, a Maths Hub, an English Hub, four School Direct providers, two national support schools and an appropriate body. These organisations work together to form the Outwood Institute of Education and work to support schools to improve outcomes for young people across the North of England.

The OIE originated from the Outwood Teaching School Alliance, which was established in 2011 when Outwood Grange Academy, in Wakefield, was designated one of the first national teaching schools. Between 2011 and 2014, a further three teaching schools joined alliance.

When Outwood Grange Academy was designated as a National Maths Hub in 2014 the Yorkshire and Humber Maths Hub was created. The Maths Hub joined the Outwood Teaching School Alliance to form the Outwood Institute of Education. This has since grown to now include the following organisations and is located in two bespoke training and conference centres in Doncaster and Middlesbrough.



This network work with a range of strategic partners and alliance members to form a hub of professional learning, initial teacher training and school to school support for the North of England. Below is an overview of the core purpose and remit of each organisation that forms the OIE.



The Outwood Teaching Schools

Teaching schools are centres of excellence that play an important and leading role in school improvement. The OIE is a cross-phase, multi-teaching school alliance with over 70 members. Teaching schools prioritise: co-ordinating and providing high-quality school-led initial teacher training, providing high-quality school-to-school support to spread excellent practice, particularly to schools that need it most and providing evidence-based professional and leadership development for teacher and leaders across their network.

Our Teaching Schools include:

- Outwood Grange Academy, Wakefield
- Outwood Primary Academy Kirkhamgate, Wakefield
- Outwood Academy Portland, Worksop
- Outwood Academy Ripon, Ripon
- Outwood Academy Acklam, Middlesbrough

The Yorkshire and the Humber Maths Hub

The Maths Hub programme brings together all mathematics education professionals in a national network of hubs. Each hub is locally led by an Outstanding school or college, working in partnership with neighbouring schools, colleges, universities, CPD providers, maths experts and employers. The leading school for the Yorkshire and the Humber Maths Hub is Outwood Grange Academy, Wakefield.

All the hubs collaborate as a national group, pooling experiences, expertise and ideas as a network, meeting once a term at the National Maths Hubs Forum.

The Yorkshire and the Humber Maths Hub is led by the OIE, working with key strategic partners. The Maths Hubs are a new way of harnessing the maths expertise within an area, and to spread excellent practice for the benefit of all pupils and students.

Visit: www.mathshub.outwood.com

The Outwood English Hub

The English Hub programme was launched in October 2018 when the Department for Education announced the names of 32 schools across England that were to be designated as an English Hub.

The purpose of the English Hubs is to promote a love of reading and to take a leading role in supporting schools in the teaching of early reading and phonics. English Hubs will run events to showcase excellent practice in teaching reading to local schools.

The Outwood English Hub is based Outwood Primary Academy Lofthouse Gate, and is led by the OIE.

Visit: www.englishhub.outwood.com



Teach North School Direct Programme



We are proud to partner with Durham University, Leeds Beckett University, Sheffield Hallam University and the University of York to deliver excellent teacher training across the North of England. The Teach North School Direct programme strives to develop, support and celebrate excellent trainee teachers who are well prepared for the profession. Our trainees work alongside innovative, ambitious and student-focused teachers who are passionate about raising standards and transforming lives.



All of our courses result in a PGCE with QTS and we offer training for both primary and secondary teachers.



Visit: www.teachnorth.com





The Appropriate Body

An Appropriate Body supports the induction of Newly Qualified Teachers (NQTs) in all schools and settings. The appointment of an Appropriate Body is a statutory requirement for the induction period for all NQTs. It is the Appropriate Body that makes the final decision as to whether an NQT has met the Teachers' Standards on the recommendation of the head teacher/Principal in the school where they work. They also offer support and professional development for NQTs throughout their induction period.



National Support Schools

National Support School status is given to a school if it employs a National Leader of Education (NLE). NLEs are outstanding head teachers or principals who use their skills and experience to support schools in challenging circumstances. In addition to leading their own schools, NLEs and support schools work to increase the leadership capacity of other schools to help raise standards.

Our National Support Schools include:

- Outwood Academy Foxhills, Scunthorpe
- Outwood Academy Bydales, Redcar and Cleveland



*It is always about putting students first:
raising standards and transforming lives.*



Potovens Lane, Outwood, Wakefield, West Yorkshire, WF1 2PF
www.outwood.com